

# DENDROCHRONOLOGY

Learning about tree rings with kids.



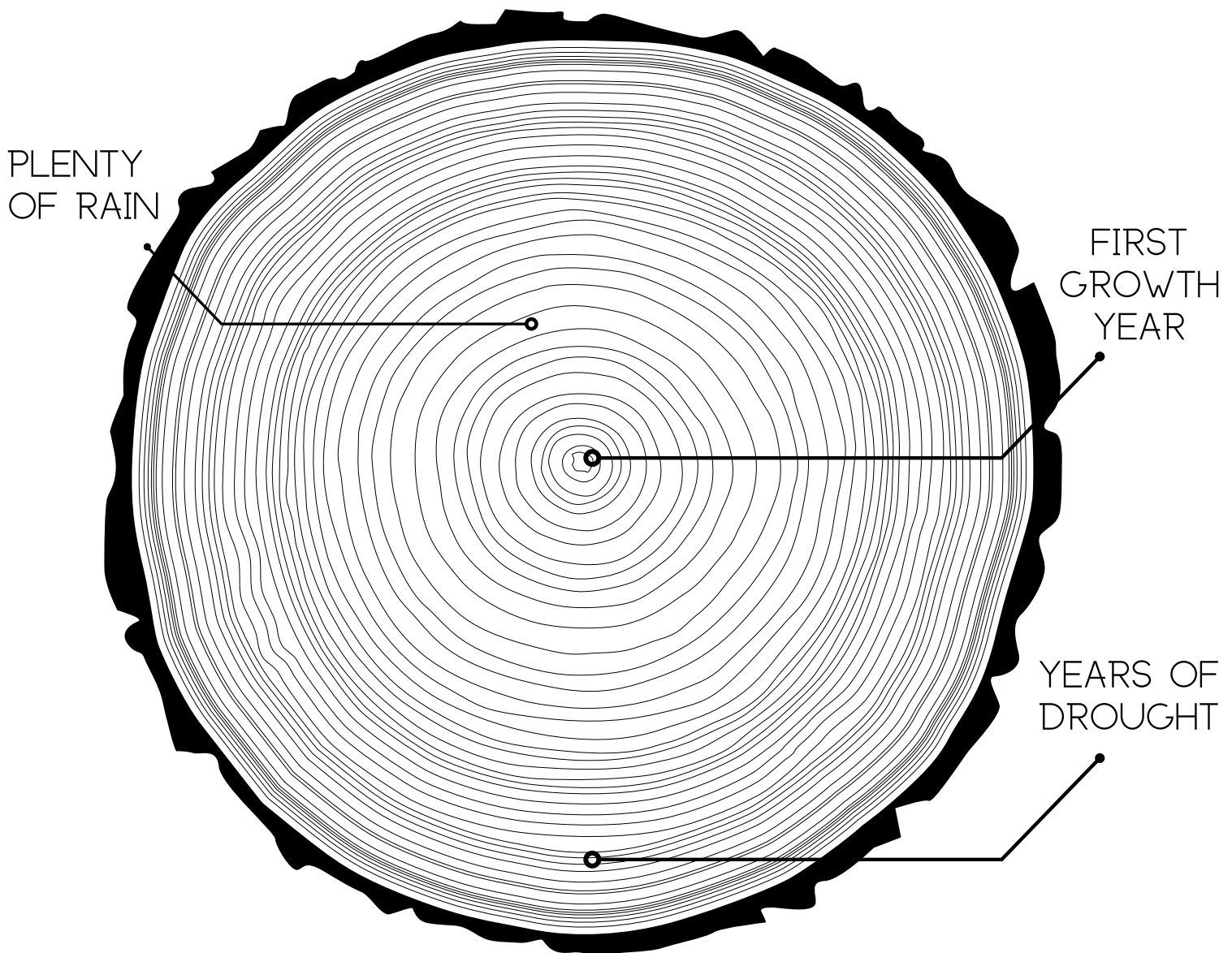
# DENDROCHRONOLOGY:

The science of studying a tree's rings.

By studying a tree's rings, you can learn:

- how old the tree is
- weather patterns from the past
- clues about what happened in this forest years ago!

Notice the wide, white rings and the thin, dark rings. Together, these make up one year of the tree's life. To get an accurate age, count only the dark rings!



## WHAT TO LOOK FOR:

Extra wide rings

Very thin rings

Tree rings very large on one side while very thin on the other

Black marks

Long, trailing marks

## WHAT IT MIGHT MEAN:

Year with plenty of rain and optimal growing circumstances.

Year with very little rain or overcrowded forest that provided competition for tree's growth.

Something may have been leaning or pushing against tree, causing it to build extra resistance wood on the opposite side.

Potential forest fire where the tree was burned on the surface but not destroyed.

Bug infestation.

# QUESTIONS

How old is this tree?

What year was this tree "born" or did it start to grow?

How many years of drought did this tree go through?

How many years look like they might have had extra rain?

Does it look like the tree went through any sort of trauma? How can you tell?

Based on what you can see from the trees rings, tell a story about this tree's life!